

The background of the entire image is an abstract artwork by Belem Lett. It features a complex, layered composition of concentric, overlapping circular and oval shapes. The colors are primarily muted blues, greys, and off-whites, with some darker, more saturated blue areas on the left side. The texture appears to be a fine, woven or knitted pattern, giving it a tactile quality. The overall effect is one of depth and movement, with the various layers creating a sense of a 'smoke screen' or a complex, multi-dimensional space.

BELEM LETT

SMOKE SCREEN

16 April - 2 May 2020

**EDWINA
CORLETTE
GALLERY**

BELEM LETT
SMOKE SCREEN

“Smoke screen is a military term in which the literal use of smoke creates a visual barrier obscuring physical information. While in the context of painting, smoke screen refers to an obscuring surface layer, hiding previous histories of brush movements.

The works in my exhibition Smoke Screen play with surface and space through layering large gestural movements in transparent or opaque paint. There is a duality in these works. Firstly, a painting’s ability to act as a physically textural surface existing in our world, and secondly its potential to act as a veil or portal to another. The works are built up to a certain extent, so that a lot of painterly information is obscured in the end. These layers flatten space while also revealing thinly veiled apertures to hidden levels, creating an illusory sense of spaciousness and depth.

Revealing as much as they hide, these works reflect on our interactions with space, colour, gesture and movement through the traditional constraints of the rectangular frame. In doing so, they create liminal space and reflect upon the ever increasing uncertainty about our place in the world.” Belem Lett 2020

Belem Lett is a Sydney based artist former Director of Wellington St Projects 2013-2019. Lett graduated with a BFA (hons Class1) in 2008 and an MFA in 2012. In 2010 he received the Brett Whiteley Travelling Art Scholarship. In 2011 he held a residency at the Cite Internationale des Arts in Paris. He has exhibited Locally, Internationally and participated in Fairs including; Spring 1883 (Melbourne), Den Fair (Melbourne) and a solo presentation at Sydney Contemporary (Sydney) with Edwina Corlette Gallery. Lett has also been a finalist in multiple prizes including: Fishers Ghost art Award (2013, 2015, 2018), NAB emerging Artist award (2014), The Sunshine coast art Prize (2016, 2019), The Paddington Art Prize (2016, 2018- Highly Commended), The Chippendale New World Art Prize, The Elaine Bermingham National Watercolour Prize (2017- Highly Commended), The Glover Prize (2019), Arthur Guy Memorial Prize (2019) & Received the Early career prize in the Hazelhurst work on paper award (2019). Lett’s work is held in public and private collections including; Mirvac, Artbank, Crown group, 10 group, Australian Catholic University. Lett is represented by Edwina Corlette Gallery (Brisbane).



**EDWINA
CORLETTE
GALLERY**



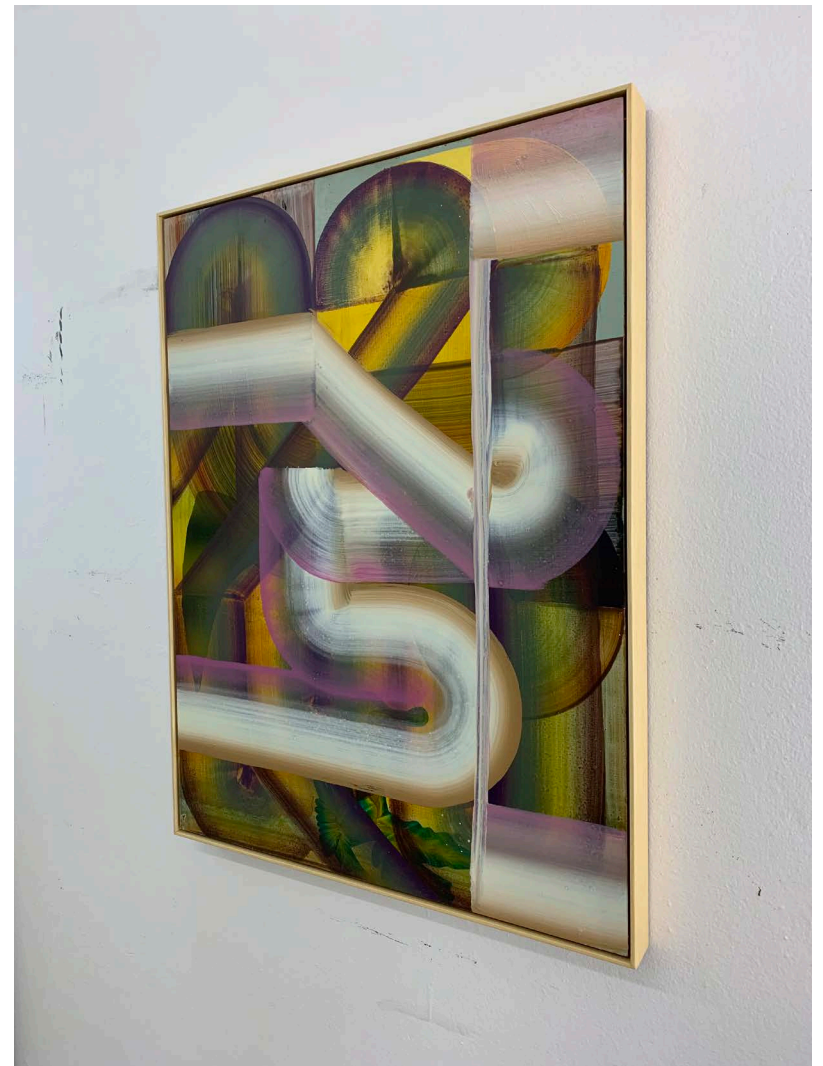
Lipid 2020
oil on aluminium composite panel
47 x 39 cm
\$3,500



Feeling Yellow 2020
oil on aluminium composite panel
122 x 94 cm
\$6,000



Feeling Yellow 2020
oil on aluminium composite panel
122 x 94 cm
\$6,000



Sliders 2020
oil on aluminium composite panel
82 x 62 cm
\$4,500



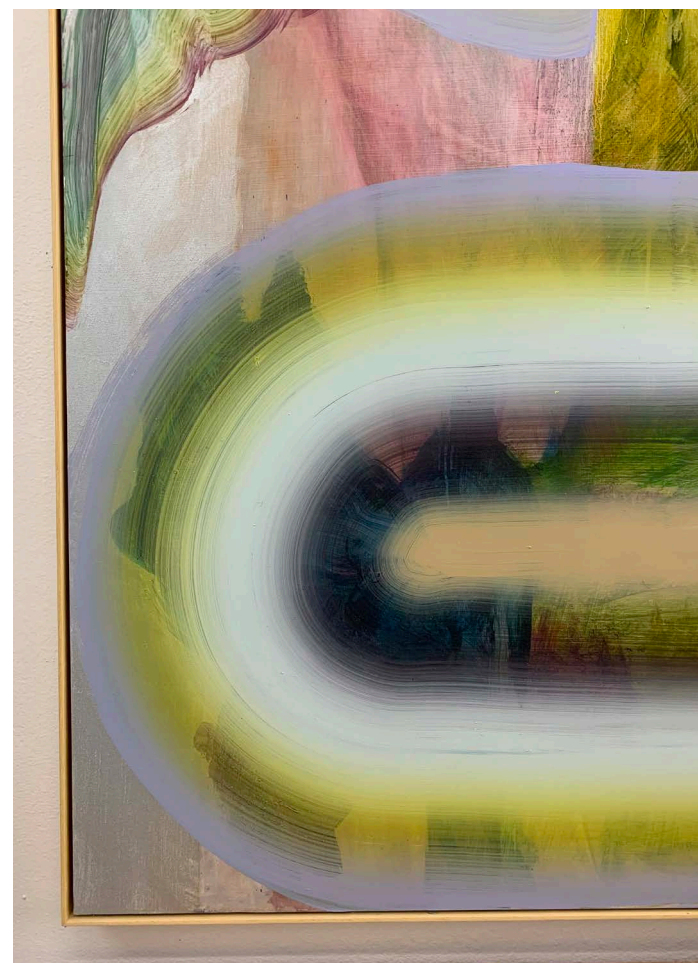
Feeling Winey 2020
oil on aluminium composite panel
68 x 51 cm
\$4,000



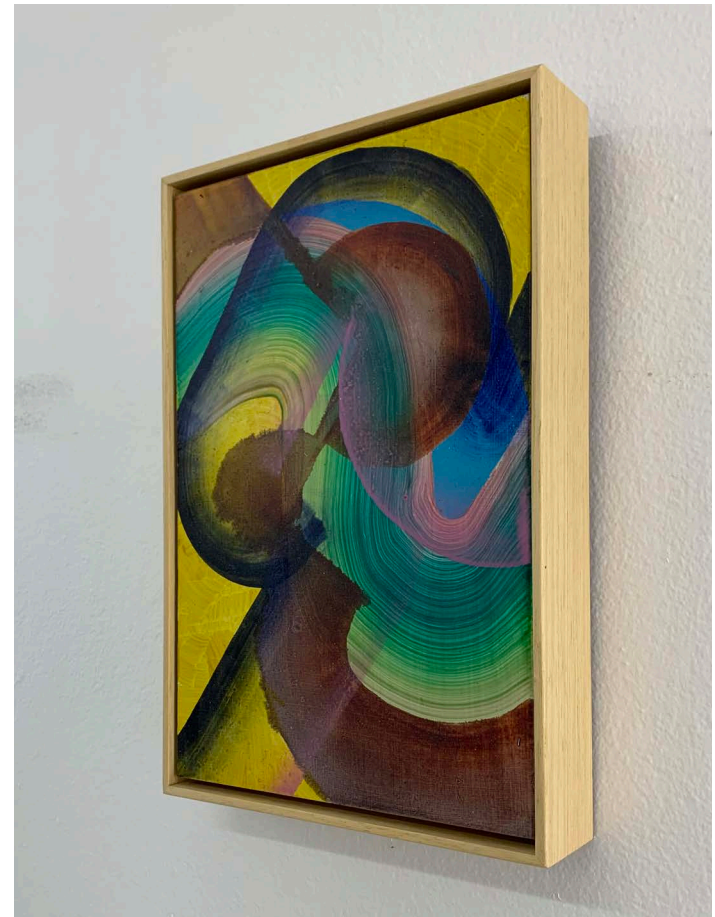
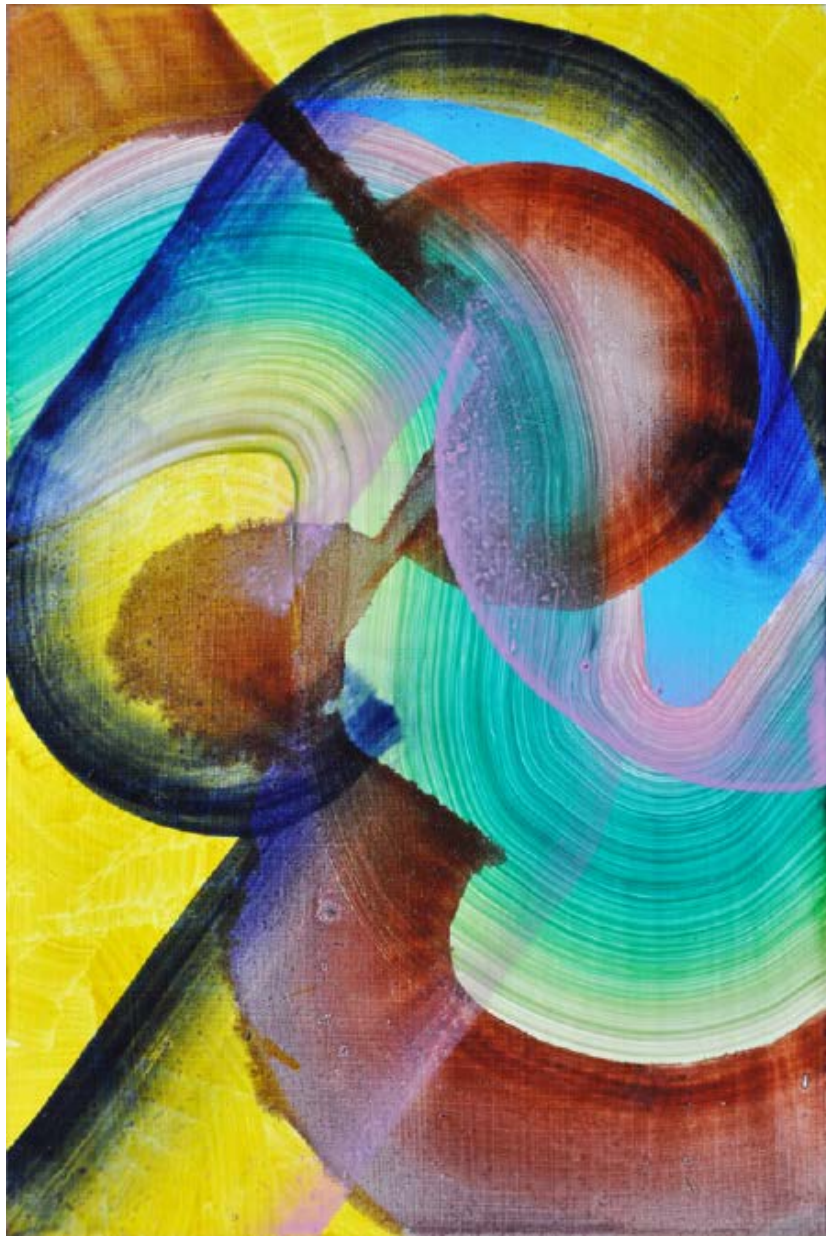
Seti 2020
oil on aluminium composite panel
82 x 62 cm
\$4,500



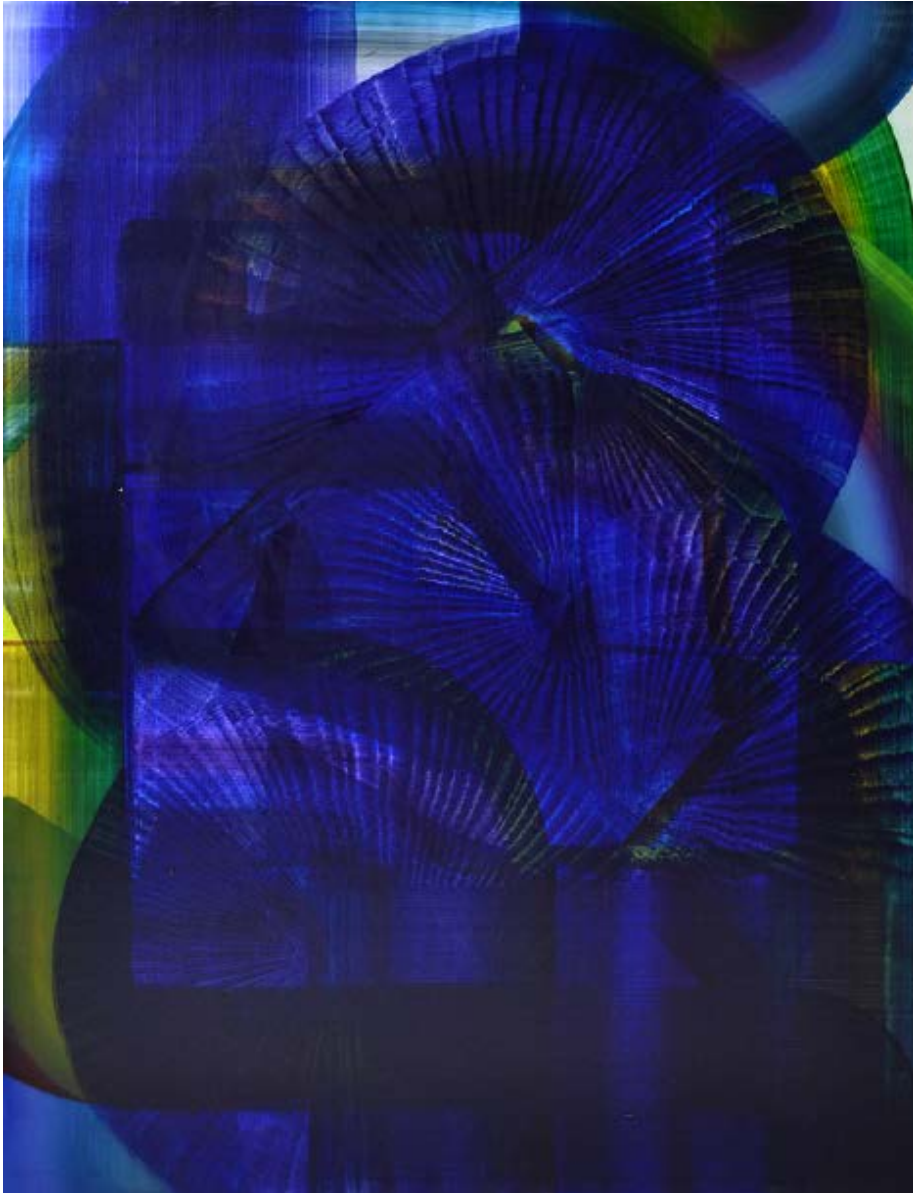
Smoke Screen 2020
oil on aluminium composite panel
122 x 104 cm
\$6,500



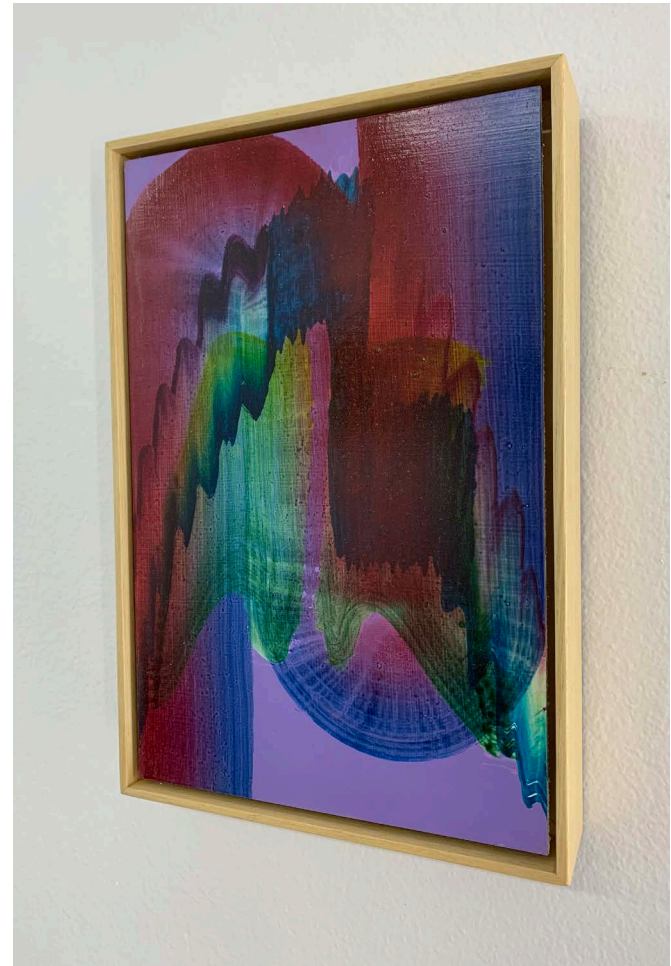
Mixed Signals 2020
oil on aluminium composite panel
163 x 122 cm
\$8,000



Crop Circles 2020
oil on aluminium composite panel
31 x 21 cm
\$2,500



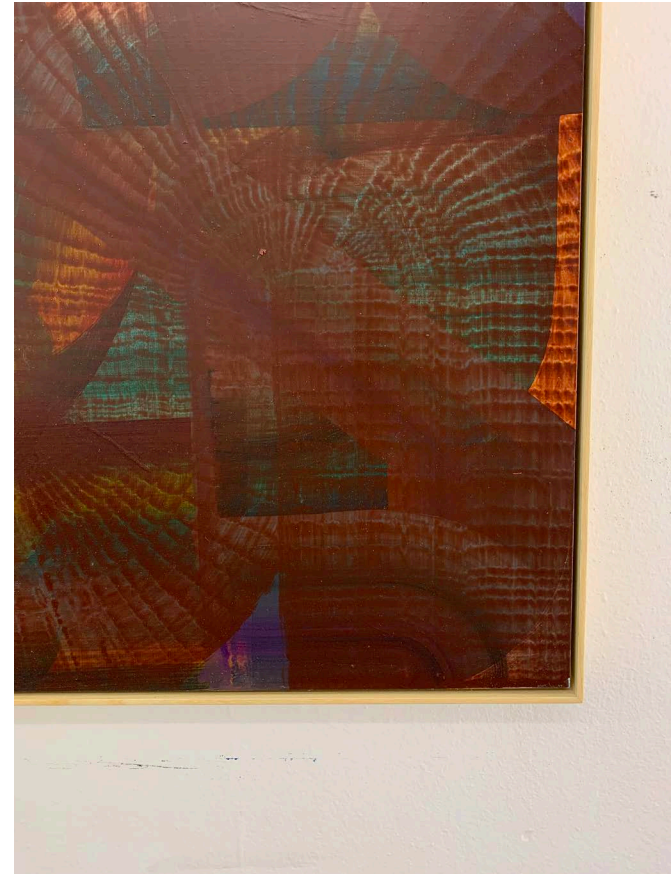
Feeling Blue 2020
oil on aluminium composite panel
122 x 94 cm
\$6,000



Lust 2020
oil on aluminium composite panel
31 x 21 cm
\$2,500



Chem Trails 2020
oil on aluminium composite panel
168 x 122 cm
\$8,000



Feeling Brown 2020
oil on aluminium composite panel
82 x 62 cm
\$4,500

BELEM LETT

Lives and works in Sydney

EDUCATION

- 2013 Masters of Fine Arts, College of Fine Arts, UNSW, Sydney
- 2008 Bachelor of Fine Arts - First class Honours, College of Fine Arts, Sydney

SELECTED SOLO EXHIBITIONS

- 2020 'Smoke Screen', Edwina Corlette Gallery, Brisbane
- 2019 'Grotto, Ideas Platform', Artspace, Sydney
'Personal Transporter (Self Balancing)', James Makin Gallery, Melbourne
- 2018 'Pipe Dream', Wellington St Projects, Sydney
- 2017 Sydney Contemporary Art Fair, Edwina Corlette Gallery
- 2016 'Paradise Lost', Edwina Corlette Gallery, Brisbane
'Aviary', Gallery 9, Sydney
- 2015 'Tunnel Vision', Gallery 9, Sydney

SELECTED GROUP EXHIBITIONS

- 2020 Durden and Ray, Los Angeles
'Collector space', Curated by Rowena Talacko for Artmonth, Shapiro Annex
'Rocococolonial', Curated by Gary Carsley, Lismore Regional Art Gallery
'Summer New', James Makin Gallery, Melbourne
- 2019 'Rocococolonial', Hazelhurst Regional Gallery, Sydney
'Rocococolonial', Bathurst Regional Gallery, New South Wales
'The New Gallery Show', Edwina Corlette Gallery, Brisbane
Brett Whiteley Travelling Art Scholarship 20 Year Anniversary Exhibition, SH Ervin Gallery, Sydney
- 2018 Sunshine Coast Art Prize, Coloundra Regional Gallery
Melbourne Pop Up Exhibition, Edwina Corlette Gallery, Brisbane
Spring 1883, Fort Delta, Hotel Windsor Melbourne
10th Anniversary Exhibition, Edwina Corlette Gallery, Brisbane
'Home Ground Advantage', The Graham Green in Dulwich Hill
'Open Eye Signal', Fort Delta, Melbourne
- 2017 Solo Presentation, Sydney Contemporary Art Fair, Edwina Corlette Gallery
New Work, Den Fair, Gallery 9 (Sydney) in Melbourne
- 2016 'Spring 1883', Melbourne
Firstdraft Fundraiser, Firstdraft Gallery, Sydney
'So Fresh', Wellington St Projects, Sydney
Finalist exhibition, Chippendale New World Art Prize
Finalist exhibition, Sunshine Coast Art Award, Caloundra Regional Gallery, Queensland

- 2015 Firstdraft Fundraiser, Firstdraft Gallery, Sydney
'North', Northern Centre for Contemporary Art, Darwin
'Bang Bang', CHASM Gallery, New York
'Friends with Benefits', Twenty Thirty Seven, Sydney

SELECTED AWARDS AND PRIZES

- 2020 Finalist, The Glover Prize, Falls Park Pavilion, Evansdale, Tasmania
Finalist, Bayside Acquisitive Art Prize, Bayside Gallery, Melbourne
- 2019 Winner, Early Career Artist Prize, Hazelhurst Art on Paper Award, Hazelhurst Arts Centre
Finalist, Arthur Guy Memorial Prize, Bendigo Art Gallery
Finalist, The Glover Prize, Falls Park Pavillion, Evansdale, Tasmania
- 2018 Finalist, Sunshine Coast Art Prize, Caloundra Regional Gallery
Finalist, Fishers Ghost Art Award, Campbelltown Regional Gallery
Finalist, Paddington Art Prize
- 2017 Highly Commended, Elaine Birmingham National Watercolour Prize, QCA
Finalist, The Glenfiddich Artists in Residence Program, Scotland
- 2016 Highly Commended, Paddington Art Prize, Woollahra
Finalist, Chippendale New World Art Prize
Finalist, Sunshine Coast Art Award
- 2015 Finalist, Fisher's Ghost Award, Campbelltown Arts Centre
- 2014 Finalist, NAB Emerging Artist Award
- 2013 Finalist, Fishers Ghost Art Award, Campbelltown Arts Centre
- 2012 Highly Commended Finalist, Tim Olsen Drawing Prize, Tim Olsen Gallery, Woollahra
Finalist (Drawing), Fishers Ghost Art Award, Campbelltown Arts Centre
- 2011 Residency, Cite Internationale des Arts, AGNSW Studio, Paris, France
Travel grant, College of Fine Art, University of New South Wales, Sydney
- 2010 Winner, Brett Whiteley Traveling Art Scholarship, AGNSW
Finalist, Kudos Emerging Artist Award, UNSW
Australian Postgraduate Award, College of Fine Arts, University of New South Wales

COLLECTIONS

Artbank
Australian Catholic University
Mirvac
Raven Contemporary
10 Group
Cornerstone Health
Crown Casino

EDWINA CORLETTE GALLERY

629 Brunswick St New Farm Q 4005
Tel +61 7 3358 6555
gallery@edwinacorlette.com
@edwinacorlettgallery